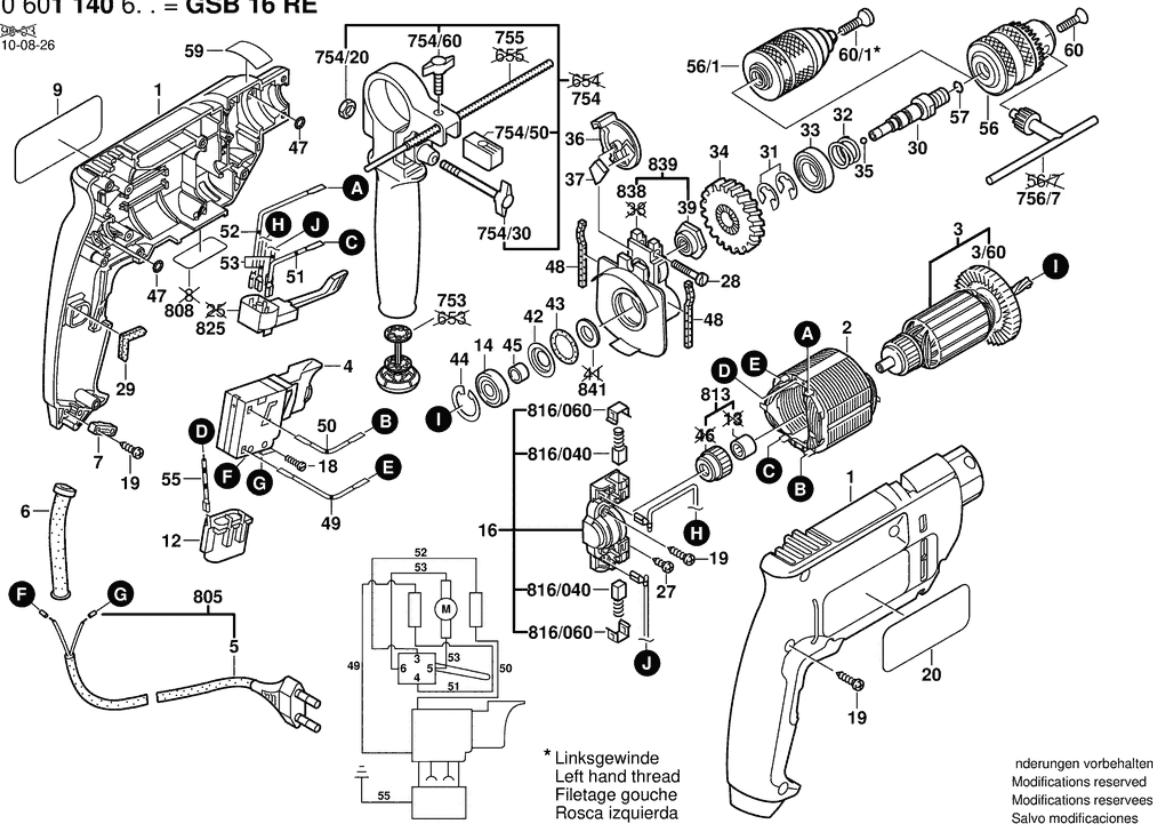


Illustration - Type - E

Typ 0 601 140 6. . = GSB 16 RE

Stand | 08-03
Issue | 10-08-26



Spare parts list

Item	Part Number	Description	Illustration
1	2 605 104 436	Housing Section BLUE	1
2	2 604 220 430	Field 240V	1
3	2 604 011 077	Armature 230-240V	1
3/60	2 606 610 029	Fan	1
4	2 607 200 209	Switch	1
6	2 600 707 059	Grommet Ø6,9 MM	1
7	2 601 035 001	Cable Clip	1
9	2 601 118 433	Manufacturer's nameplate SUNNY SIDE	1
12	2 607 329 114	Suppression Filter	1
14	2 600 905 039	groove ball bearing 9X24X7	1
16	2 605 807 060	Brush Plate	1
18	2 603 410 001	Socket head cap screw M3X6,5-4.8	1
19	2 603 490 022	Screw 4X16	1
20	2 601 118 434	Reference Plate SHADOW SIDE	1
27	2 603 490 017	Torx Oval-Head Screw 3X10	1
28	2 910 021 134	Socket head cap screw DIN 84-BM4X30-8.8	1
29	2 601 022 000	Damping Plate	1
30	2 606 135 033	Drilling Spindle THREADS 1/2",M6 LEFTHAND	1
31	2 600 118 001	Locking washer 0,6 MM	1
31	2 600 118 002	Locking washer 0,8 MM	1
31	2 600 118 006	Locking washer 0,3 MM	1
31	2 600 118 007	Locking washer 1,2 MM	1
32	2 604 617 000	Compression Spring	1
33	1 900 905 122	groove ball bearing 15X32X9	1
34	2 606 320 050	Cylindrical Gear Z=42	1
35	1 903 230 010	Ball DIN 5401-5,5MM-III-ST	1
36	2 601 990 001	Indexing Disk BLACK	1
37	2 601 074 003	Pressure Plate	1
39	2 606 490 056	Screen Disc	1
42	2 600 500 014	Cupped Washer	1
43	1 900 210 117	O-Ring 18X3 MM	1
44	2 916 660 008	Spring retaining ring DIN 472-24X1,2 MM	1
45	2 600 400 008	Receptacle	1

Spare parts list

Item	Part Number	Description	Illustration
47	1 900 210 000	O-Ring 5,0X1,5 MM	1
48	2 601 005 011	Felt Strip	1
49	2 604 448 060	Cable L=173 MM WHITE	1
50	2 604 448 045	Cable L=98 MM BLACK	1
51	2 604 448 034	Connecting Cable L=88 MM WHITE	1
52	2 604 448 132	Connecting Cable L=103 MM BLUE	1
53	2 604 448 115	Connecting Cable L=73 MM WHITE	1
55	2 604 448 103	Earth Conductor	1
56	1 608 571 069	Chuck Ø1,5-13 MM, 1/2"	1
56	2 608 572 106	Keyless Chuck Ø 1,5-13 MM, 1/2"	1
57	2 604 601 004	Retaining ring	1
59	2 601 110 580	Sticker	1
60	2 603 421 215	Countersunk-Head Screw M 6X38 MM LEFTHAND THREADS	1
60/1	2 603 421 213	Countersunk-Head Screw M 6X34 MM LEFTHAND THREADS	1
753	2 607 000 122	Drill Holder	1
754	1 619 PB4 323	Auxiliary Handle	1
754/20	2 915 011 007	Hex Nut DIN 934-M6-8-A	1
754/30	1 613 480 007	Wing Screw M6X(15)55	1
754/50	2 608 040 014	Clamping Plate M6	1
754/60	1 613 480 008	Wing Screw M6X20 MM	1
755	1 613 001 005	Depth-Gauge SW 6X210 MM	1
756/7	2 607 950 007	Chuck Wrench SG2	1
805	1 607 000 385	Power supply cord EU 2,6M 2 X 1,0 MM	1
808	2 601 119 001	Nameplate	1
813	2 600 917 902	Needle-Roller Bearing	1
816/040	2 604 321 913	Carbon-Brush Set	1
816/060	2 601 322 013	Ratchet Cap	1
816/060	2 601 329 051	Ratchet Cap	1
825	2 607 200 231	Change-Over Switch	1
838	2 605 807 029	Bearing Bracket	1
839	2 605 807 915	Bearing Bracket	1
841	2 600 108 000	Felt Washer	1